

# LYMAN HOMES

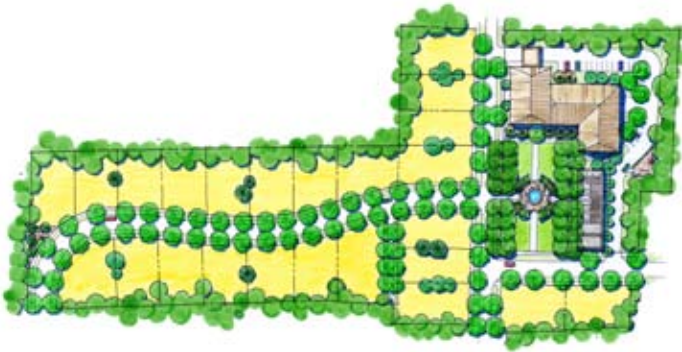
Marietta, Georgia



TSW was retained by the Marietta Housing Authority to prepare four alternative site concept plans for the redevelopment of Lyman Homes. Each of the four site concept plans were developed using different zoning categories: Design A consists of single-family residential based on R-4 zoning; Design B is comprised of single-family residential and multifamily with a two or three story senior building; Design C consists of multifamily residential, which is a combination of townhomes and condominiums; and Design D is single-family that maximizes open space and creates a desirable pedestrian scale.



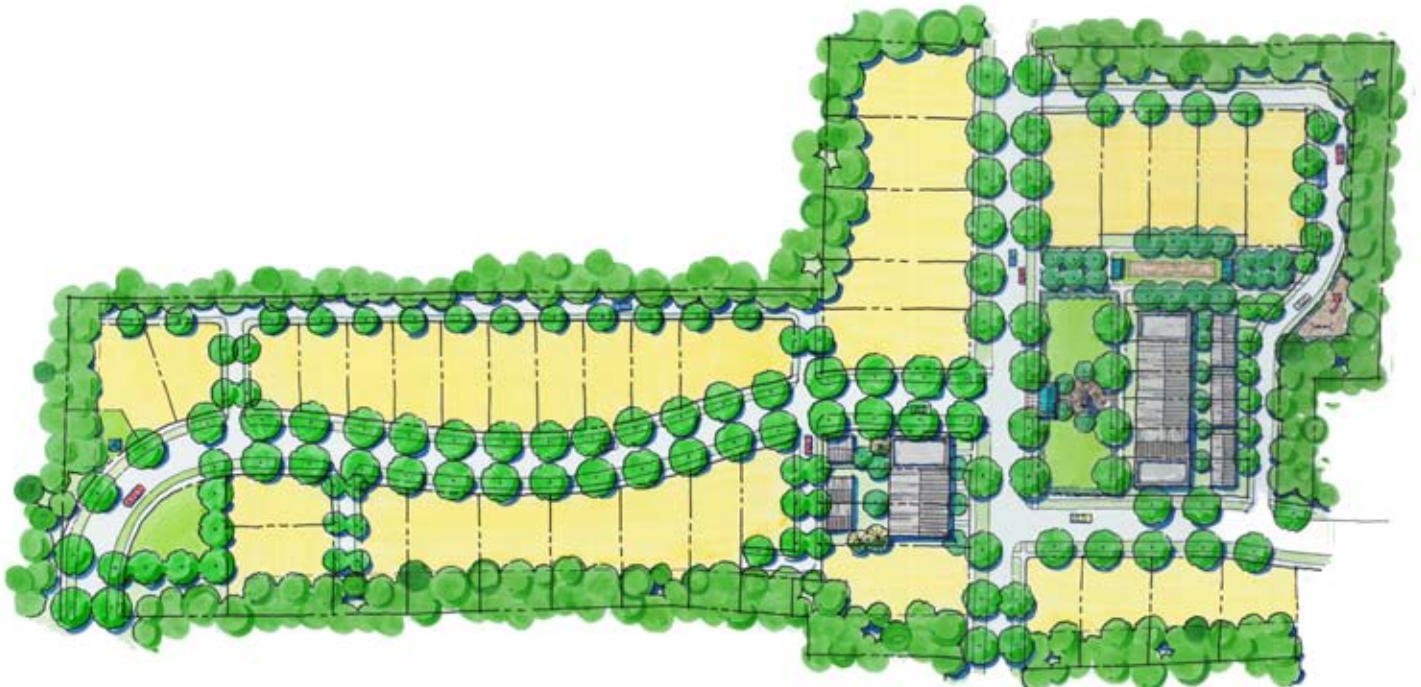
Design A is comprised of single-family based on R-4 zoning



Design B incorporates a senior housing building and single-family residences



Design C consists of townhomes and condominiums



Design D consists of single-family residences that maximize open spaces