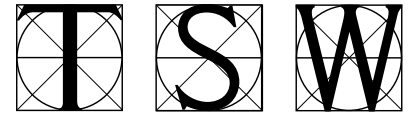


CITY HALL EAST

Atlanta, Georgia



TUNNELL-SPANGLER-WALSH & ASSOCIATES



Tunnell-Spangler-Walsh has joined with developer Emory Morsberger's Ponce Park Team to create a site master plan and adaptive re-use strategy for the upcoming revitalization of Atlanta's City Hall East.

The former Sears building, built in 1926, will undergo a dramatic transformation into a mixed-use project featuring residential, office, retail, and park space.

The redeveloped City Hall East will have 1,300 residential units in a combination of rental and owner-occupied units housed in both rehabilitated and new buildings. Some of these units will be work-force housing, some of which may be reserved for seniors.



The plan also calls for 250,000 square feet of retail space, 100,000 square feet of offices, and 8 acres of green space.

