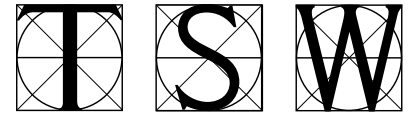


# CENTENNIAL WALK

Roswell, Georgia



TUNNELL-SPANGLER-WALSH & ASSOCIATES



Centennial Walk is a new live/work community being developed in North Fulton County. Designed as a walkable community, Centennial Walk encompasses commercial space, assisted living, condominiums, and townhouses. Located within walking distance of Hillside Elementary and Centennial High School, the development has a traditional neighborhood look and feel, with tree-lined sidewalks, numerous parks and a community pool.

The neighborhood's commercial center features a Main Street with hidden parking, while retail and restaurant space are all within walking distance to community residents.

Centennial Walk offers the best of both worlds: the warm charm of a neighborhood community with the urban convenience of walkable destinations.

*right: Concept Master Plan  
bottom left: Main Street terminates with the community fountain  
bottom right: Sidewalk retail found along Main Street*

