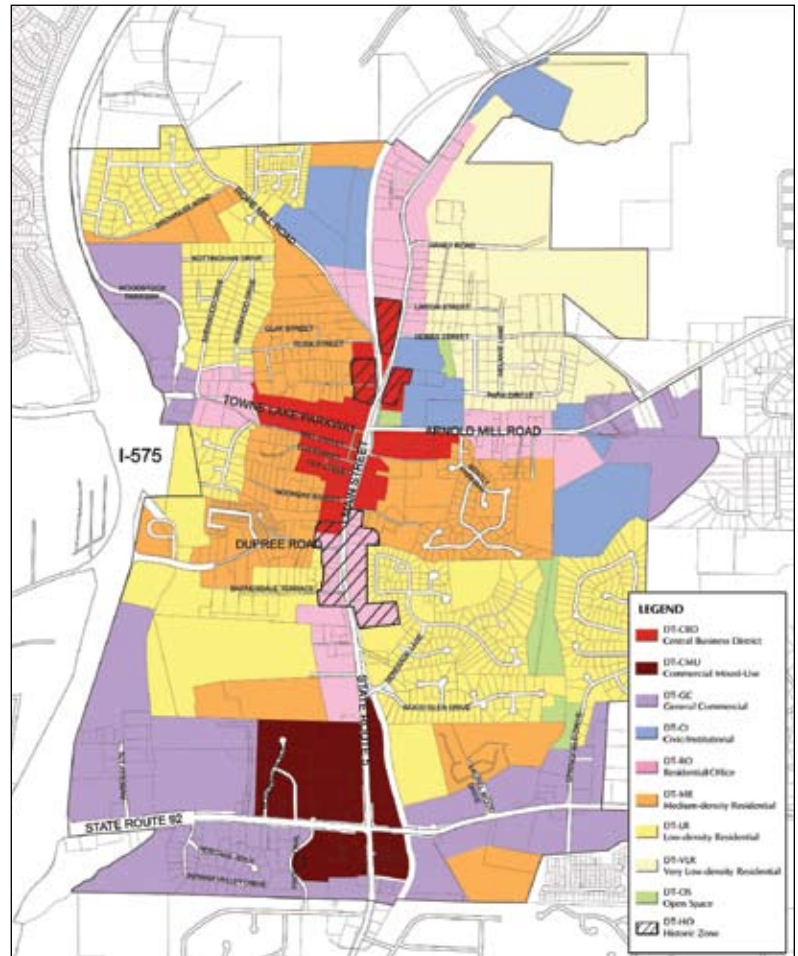


After the completion of its LCI Study in 2002, the City of Woodstock and the Woodstock Downtown Development Authority retained TSW to develop a design-based code. The foundation of the design-based code is to protect the existing historic character by ensuring that infill development and adjacent new developments support and enhance the historic character of the area.

Through the process, TSW facilitated a steering committee to guide the development of the code, identified critical historic buildings, and conducted a photographic survey of historically significant commercial and residential structures.

The code was adopted in mid-2005.



**LEGEND**

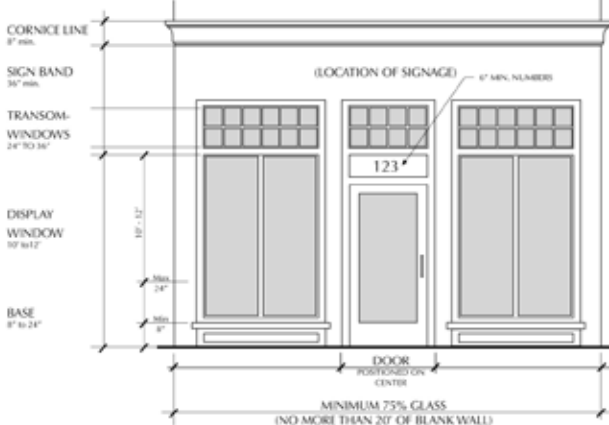
- DT-CBD Central Business District
- DT-CMU Commercial Mixed-Use
- DT-GC General Commercial
- DT-CI Civic/Institutional
- DT-RO Residential Office
- DT-MR Medium-density Residential
- DT-LR Low-density Residential
- DT-VLR Very Low-density Residential
- DT-OS Open Space
- DT-HO Historic Zone

STOREFRONT TREATMENT



above: Downtown District Subareas Map  
 left: Storefront Treatment  
 bottom left: Detailed Storefront Treatment  
 bottom right: Detailed Residential Treatment

STOREFRONT TREATMENT



RESIDENTIAL TREATMENT

