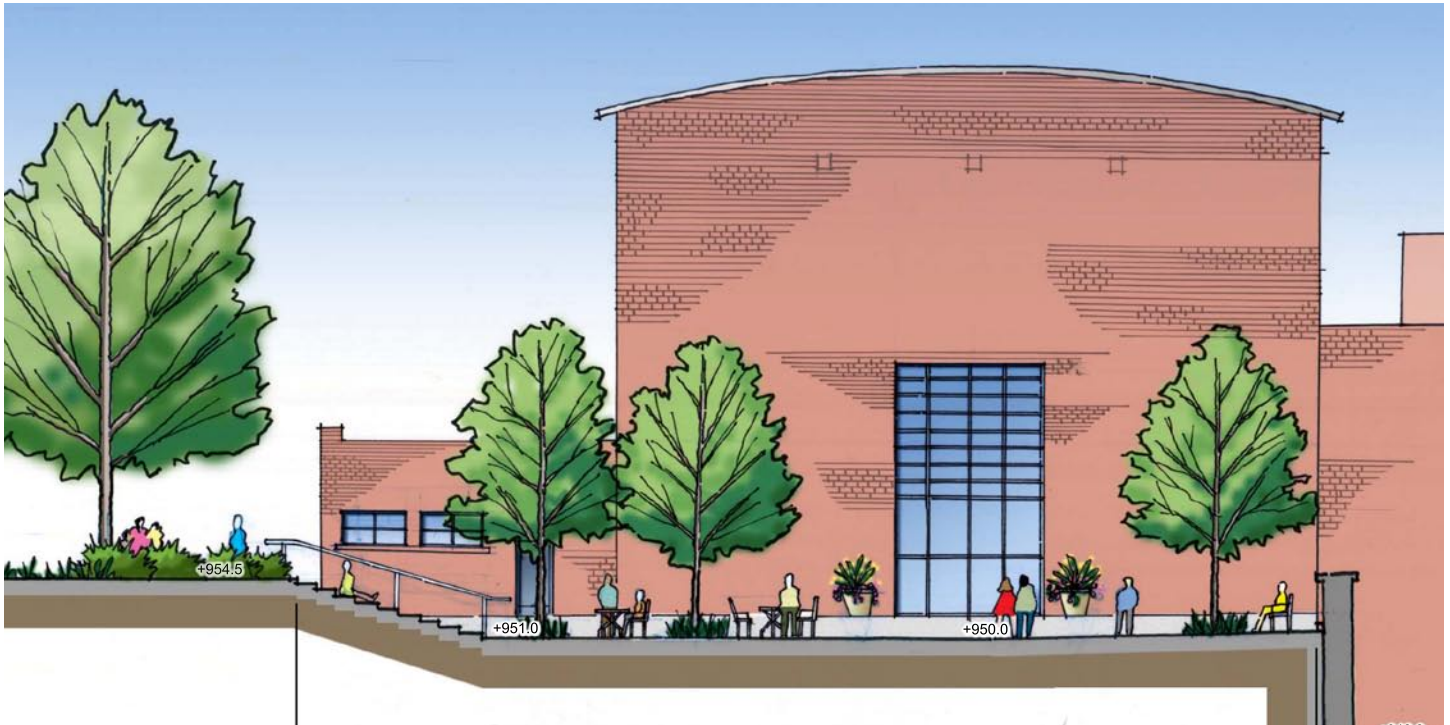


# GEORGIA TECH HINMAN COURTYARD

Atlanta, Georgia



top: Section of courtyard area  
above: Rendering looking onto courtyard

TSW was chosen to design the courtyard for the renovated Hinman Building that included the removal of a substation, which changed the program for the space.

The recently constructed Old Civil Engineering Building Courtyard, which was part of Phase I, has synergy with the space. The Hinman Building renovation added a large glass garage door that has a strong axial relationship to the courtyard. The glass door provides a view from the architectural studio space to the courtyard. The space was designed to accommodate large scale model building by providing large open spaces that are unobstructed. The courtyard includes a grand set of steps for circulation with the idea of having space for an outdoor classroom.

The design also provides a tightly spaced grove of trees that will provide shade with moveable table and chairs. Sustainable components include an additional water cistern for roof drainage and rain garden for surface drainage. The overall design is a simple, contemporary space that reflects the program created during the discovery process.